

# SYSTEM LEVEL RELIABILITY TEST SERVICES

- CLIMATE TESTS
- TEMPERATURE CYCLING
- MECHANICAL SHOCK TESTS
- MECHANICAL VIBRATION TEST
- CORROSION TEST
- HALT

# SYSTEM LEVEL RELIABILITY TEST SERVICES



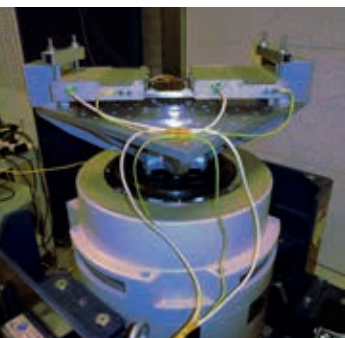
## CLIMATE TESTS

- Several ESPEC Climate Test systems available
- Temperature range: -40°C / +150 °C
- Humidity range: +40%/+95% R.H.
- According to all major international standards and customer specific requirements
- In compliance with EN ISO/ISO 17025 accreditation (\*)
- Central Monitoring System (CMS)



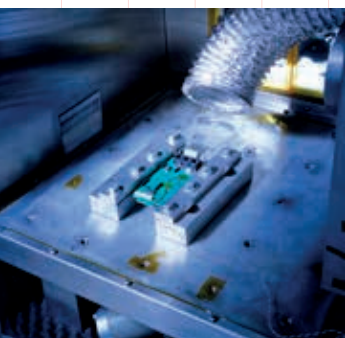
## TEMPERATURE CYCLING TESTS

- Several ESPEC Temperature Cycling Test systems available
- Temperature range: -70°C / +300 °C
- According to all major international standards and customer specific requirements
- In compliance with EN ISO/ISO 17025 accreditation (\*)
- Central Monitoring System (CMS)



## MECHANICAL TESTS

- In house custom design and manufacturing of test fixturing
- Lansmont M23 Shock tester
  - Shock level: Max 10000 G
  - Pulse shape: Half Sine / Trapezium
- Electro Dynamic Shaker (ETS Solutions M124/GT600M)
  - Frequency range: DC - 4000Hz
  - Sine acceleration: 100g and displacement: 51mm
  - Sine force: 10.000N/1.000kgf



## OTHER TESTS

- CORROSION test:
  - VLM Salt Mist test system, 600 liter test area
  - Humidity Range: 95 % to 98%
  - According to all major international standards and customer specific requirements
- HALT test:
  - Locate weak spots in your prototype within a few days
  - Temperature range: -100°C /+200°C, max 60 K/min
  - Acceleration: Max 45 Grms

(\*) For our EN ISO/IEC 17025 accreditation scope please check our website or [www.rva.nl](http://www.rva.nl) (L388).